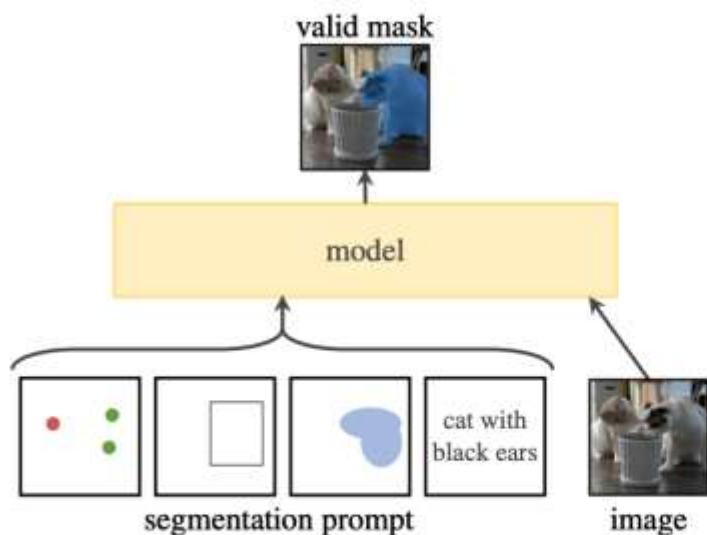


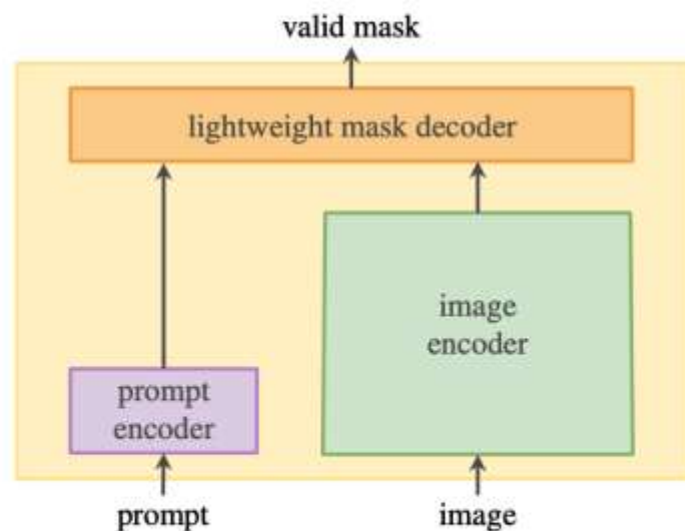
Segment Anything

Alexander Kirillov^{1,2,4} Eric Mintun² Nikhila Ravi^{1,2} Hanzi Mao² Chloe Rolland³ Laura Gustafson³
Tete Xiao³ Spencer Whitehead Alexander C. Berg Wan-Yen Lo Piotr Dollár⁴ Ross Girshick⁴
¹project lead ²joint first author ³equal contribution ⁴directional lead

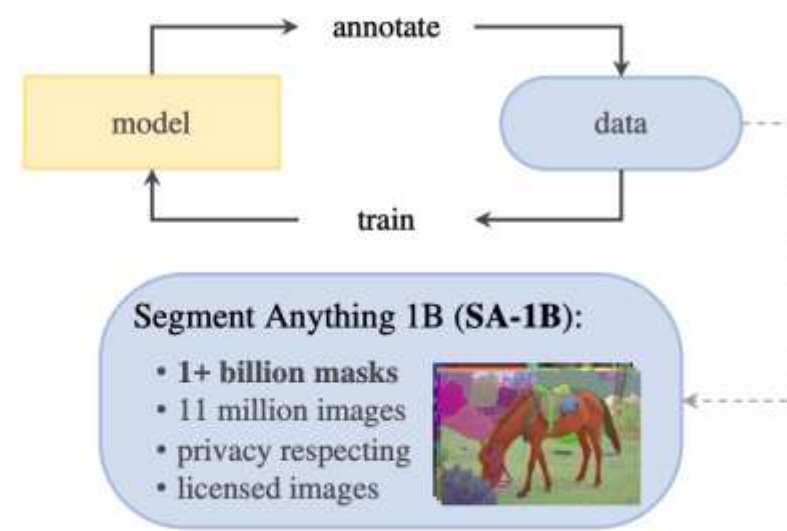
Meta AI Research, FAIR



(a) **Task:** promptable segmentation



(b) **Model:** Segment Anything Model (SAM)



(c) **Data:** data engine (top) & dataset (bottom)

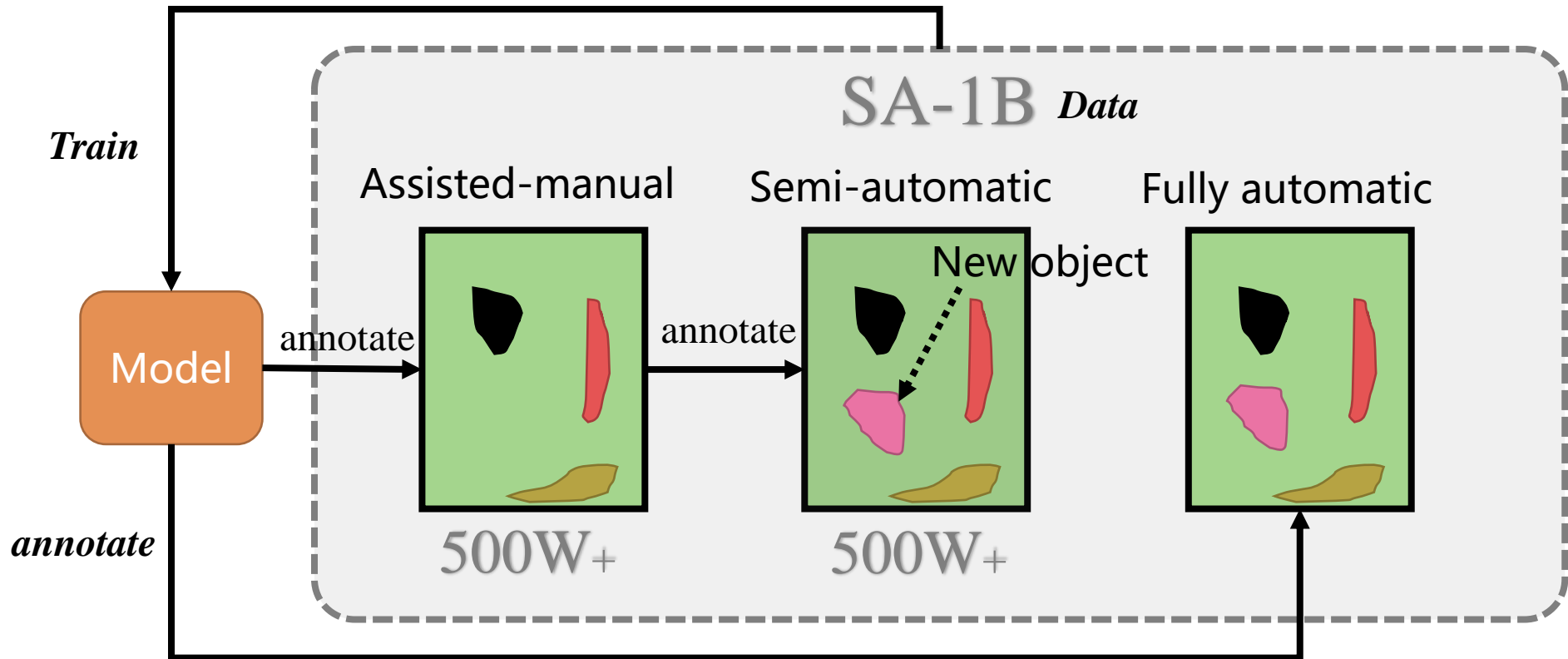
➤ 里程碑意义的体现

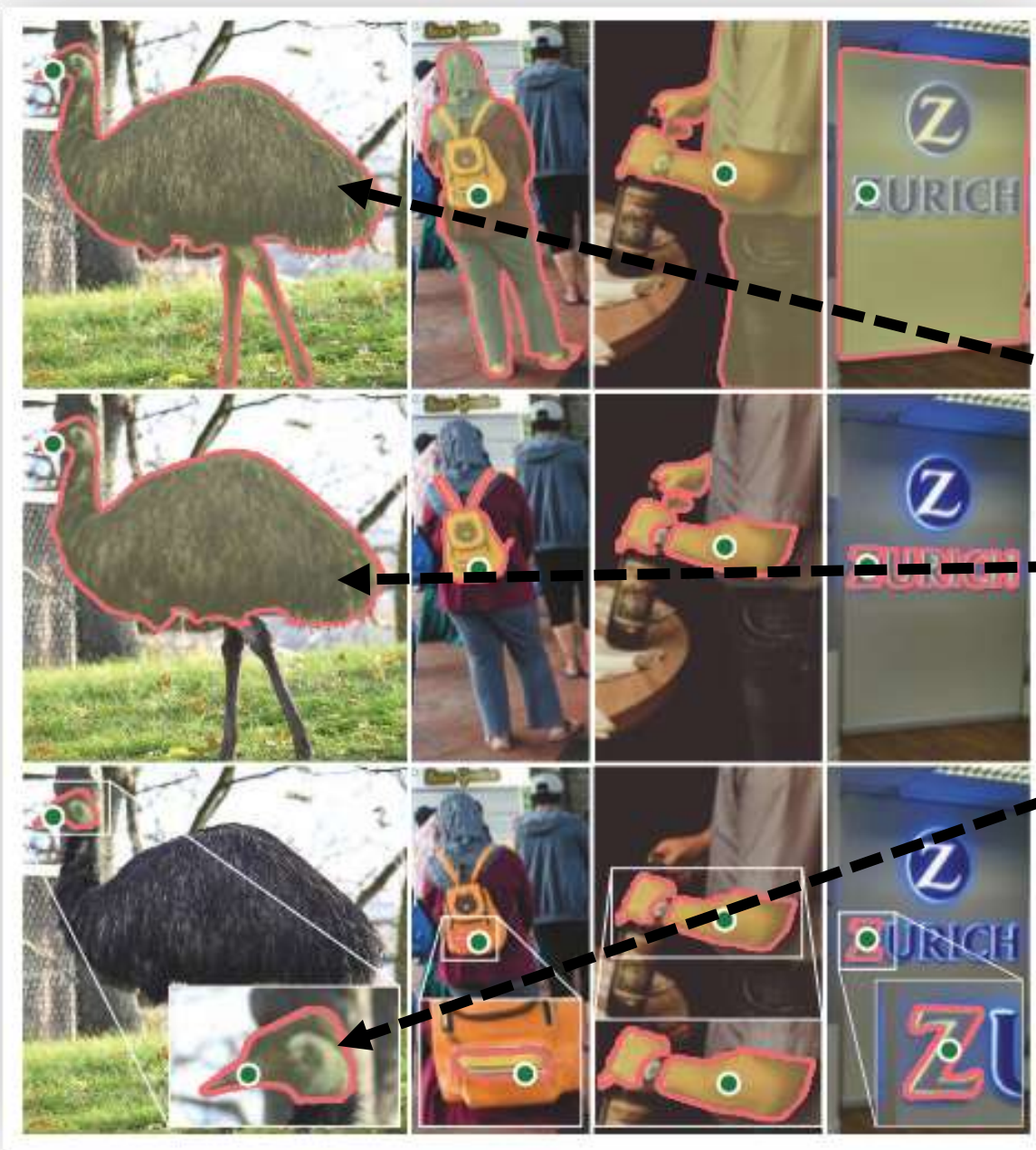
➤ 特点:

- 数据引擎，数据集庞大SA-1B, 1Bmasks+11M images
- 简单构建，本地运行，实时运行cpu-50ms
- 视觉提示交互进行

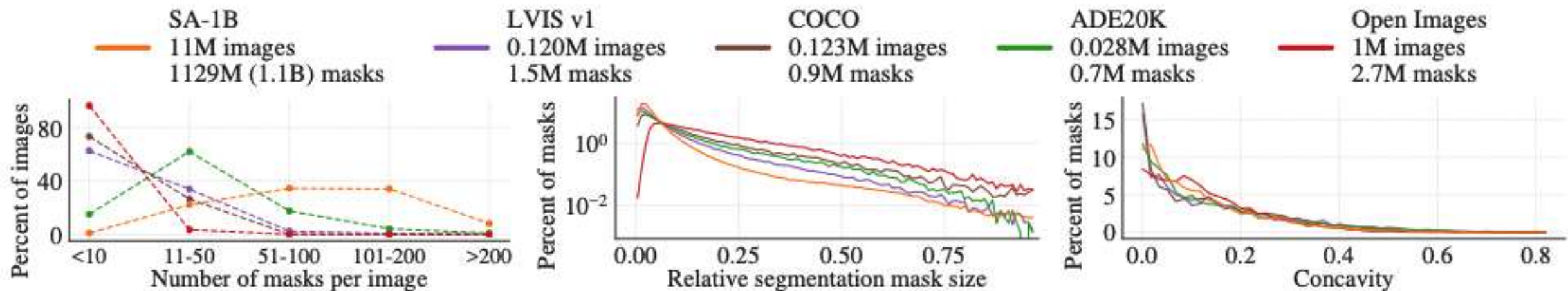
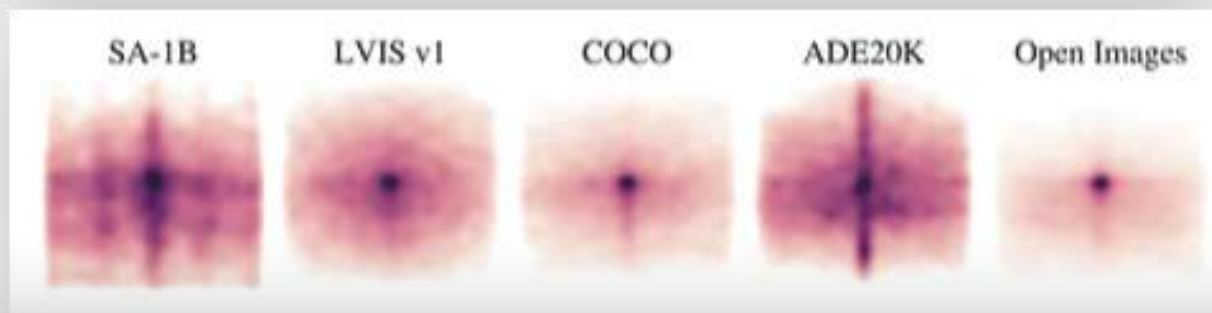
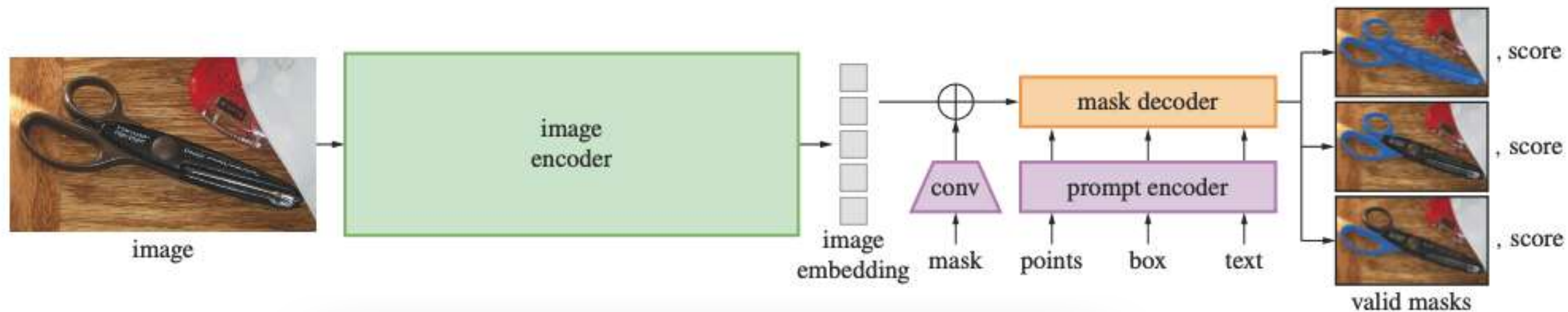
Data Engine: 【数据生成数据】——目前未开源

- Assist-manual
- Semi-automatic 【LabelStudio样式】
- Fully-automatic





输出三部分：
Whole
Subpart
Part



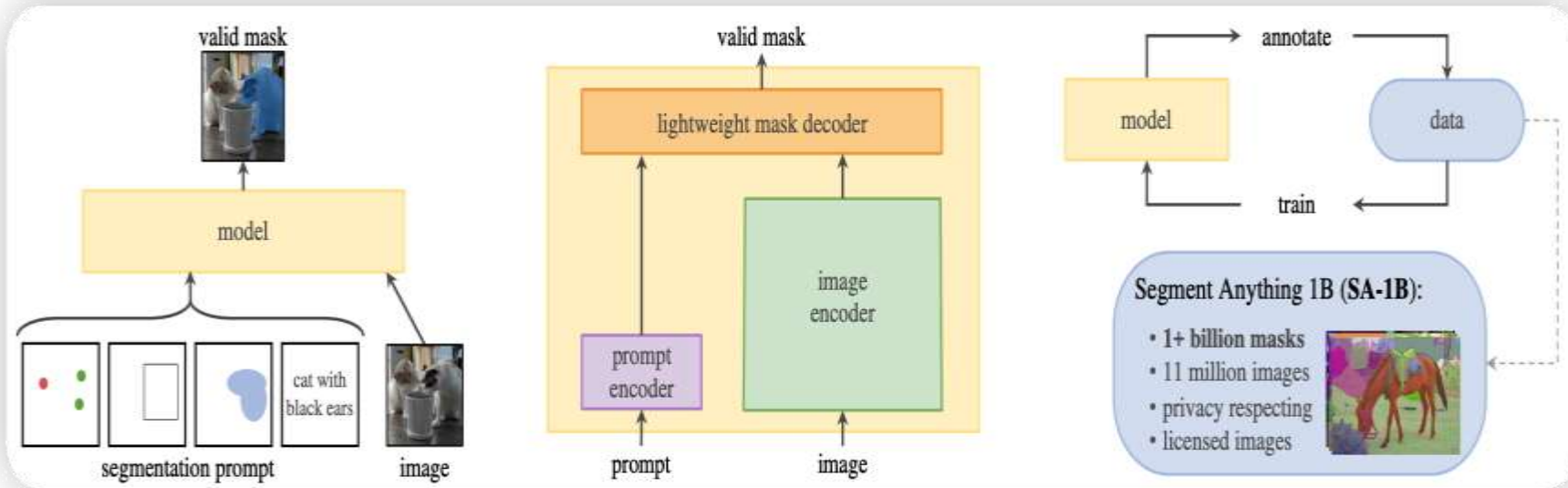
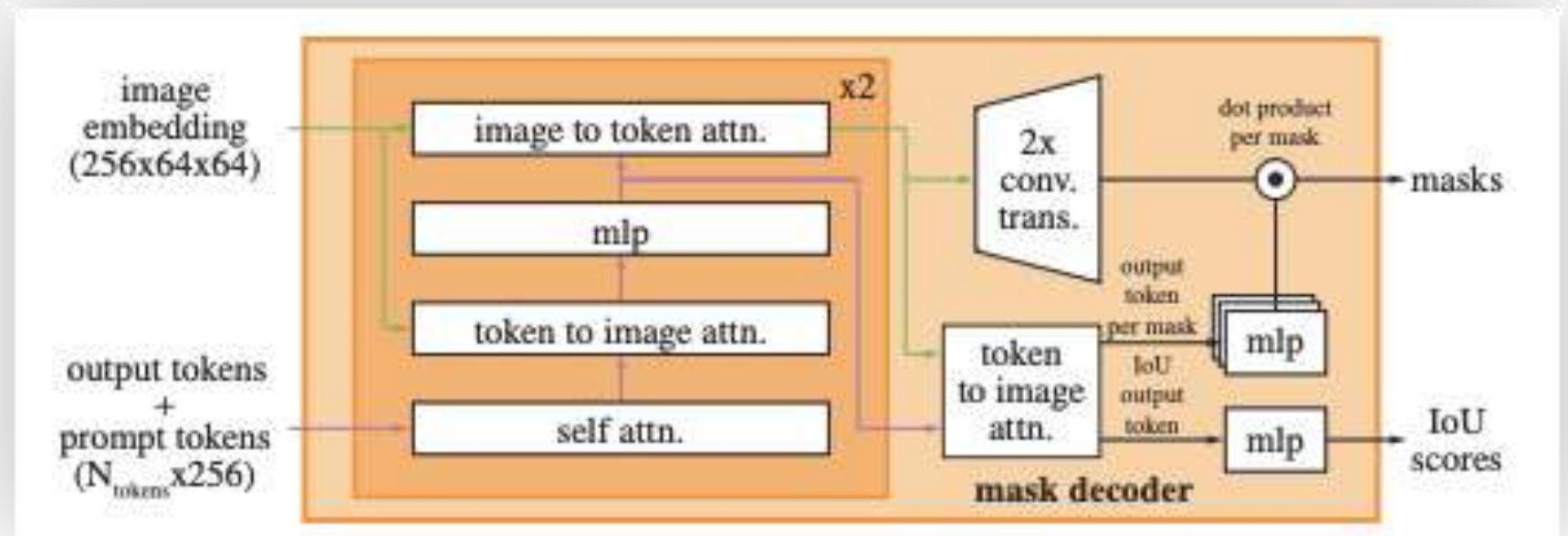


Image Encoder: ViT-H
 Prompt Encoder: CLIP

MASK decoder (MaskFormer-like)

- Prompt tokens
- Token-to-image
 & Image-to-token attention



Thanks